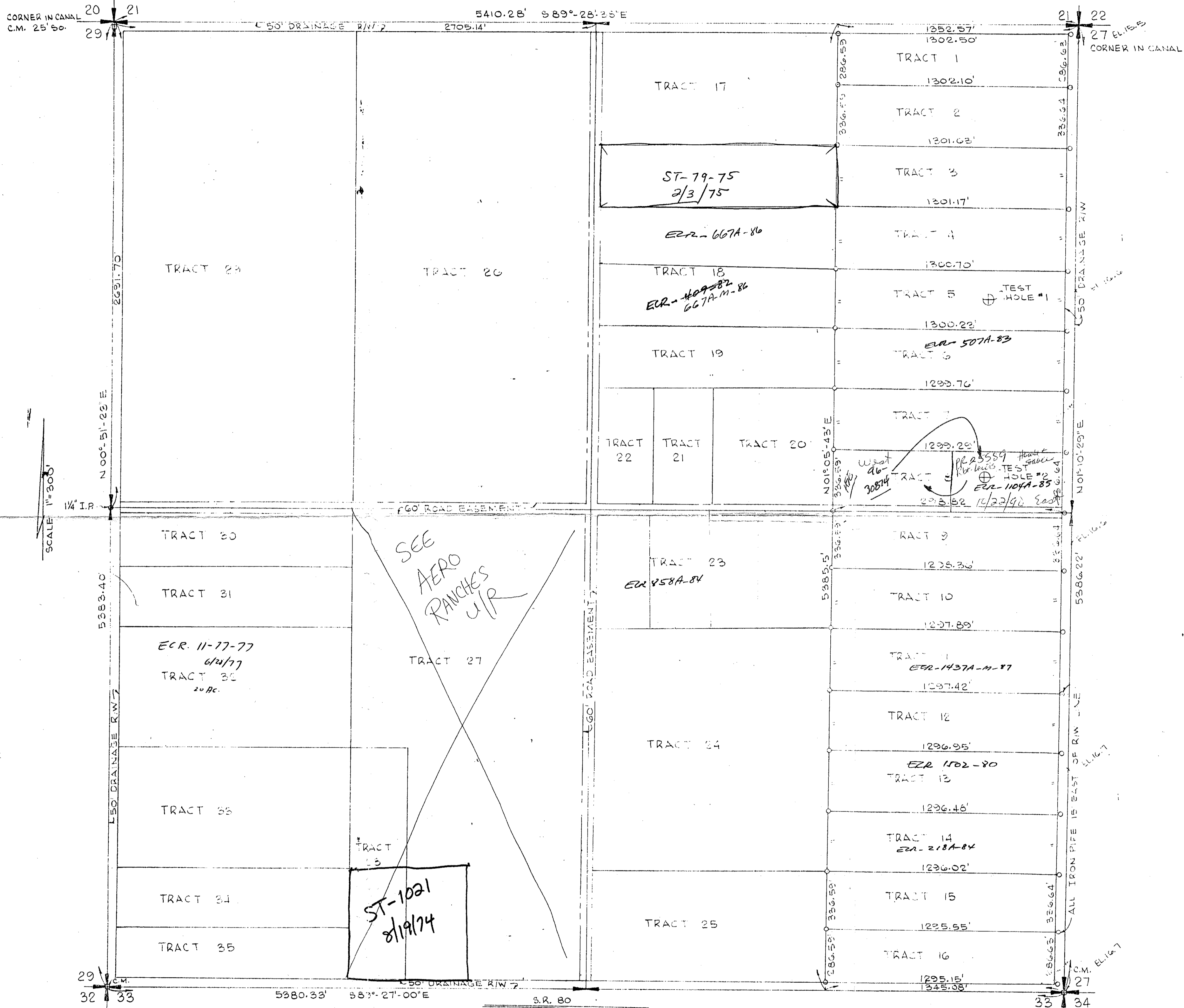


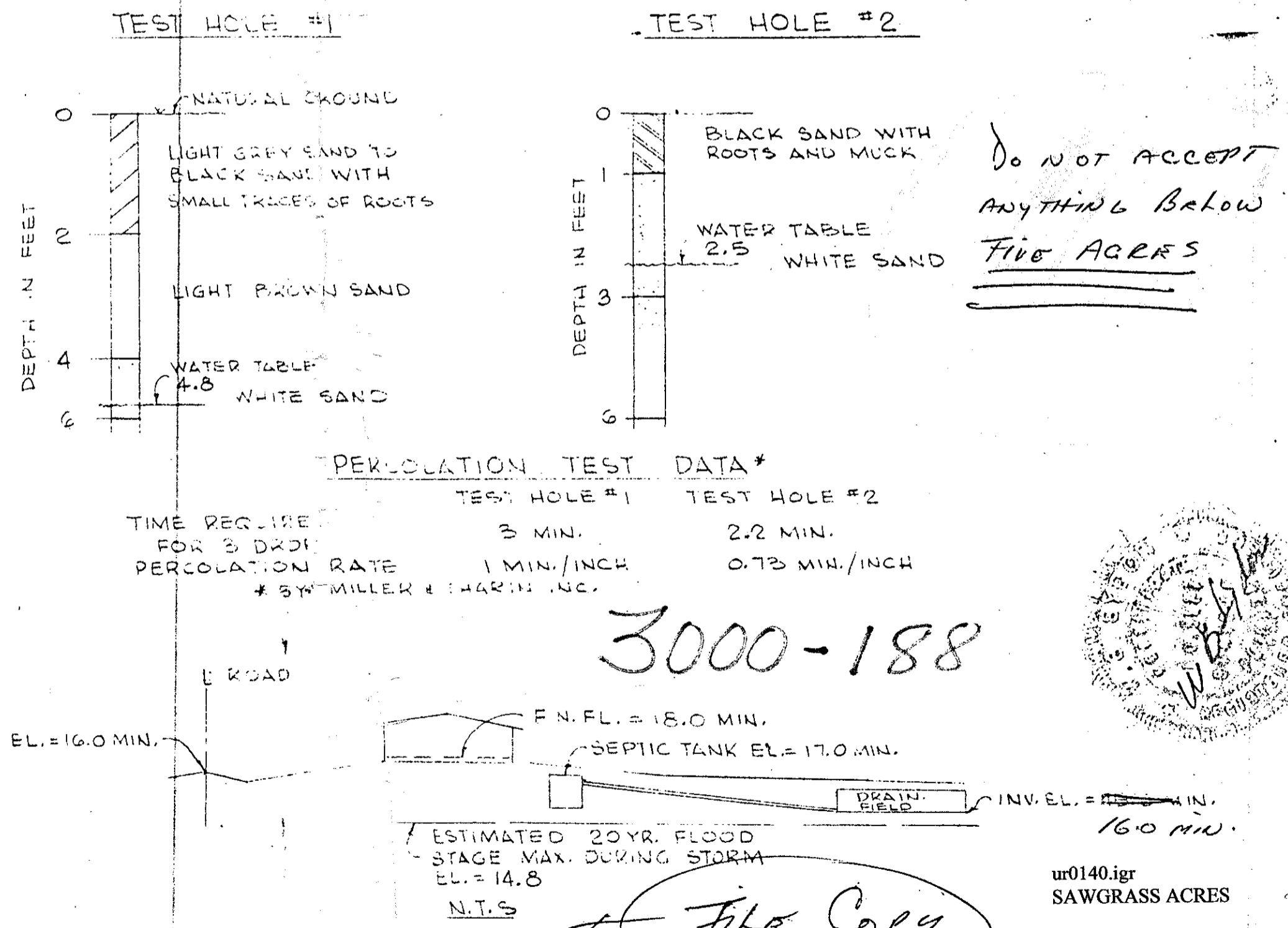
UNRECORDED PLAT OF SECTION 28 TWP. 44S RGE. 41E

PALM BEACH COUNTY, FLORIDA

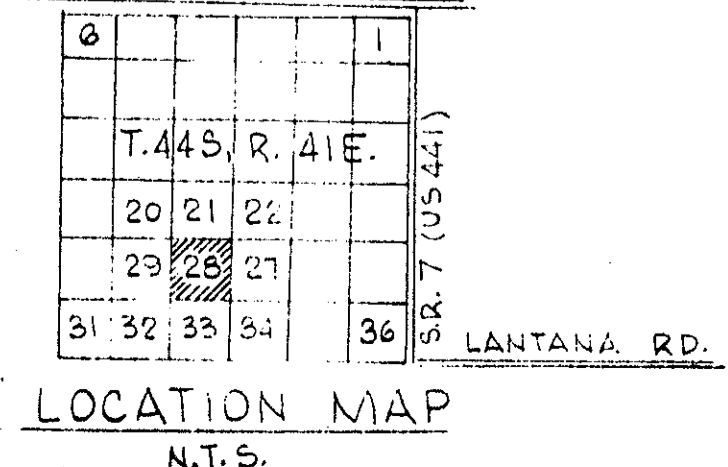
Sawgrass Acres S/D



APPROVED BY
 PALM BEACH COUNTY HEALTH DEPARTMENT
 Date: JUN 22 1971 Serial No. 58-7
 FOR: LAWRENCE D. LUKIN, P.E.
 Director, Div. of Environmental Health
 BY: *Lee H. Wood*
NOTE: THIS APPROVAL IS NOT INTENDED TO COVER STRUCTURAL DESIGN.



Do NOT ACCEPT ANYTHING Below FIVE ACRES



GEE & JENSON CONSULTING ENGINEERS, INC.
 WEST PALM BEACH FLORIDA

TRACT LAYOUT, SOIL BORINGS & PERCOLATION TEST DATA

FOR SAWGRASS ACRES INC.

DESIGNED	W.G.W.	DRAWN	R.P.G.	CHECKED	T.E.M.	DATE	6-16-71	SCALE	AS NOTED	APPROVED	<i>WWS</i>	DRAWING NO.	71-119	FILE NO.		SHEET	1	OF	1
----------	--------	-------	--------	---------	--------	------	---------	-------	----------	----------	------------	-------------	--------	----------	--	-------	---	----	---

REVISION	DATE	DESCRIPTION	BY